



**India Meteorological Department
(Ministry of Earth Sciences)**

NATIONAL BULLETIN NO. 06 (ARB/03/2022)

TIME OF ISSUE: 1500 HOURS IST

DATED: 15.12.2022

FROM: INDIA METEOROLOGICAL DEPARTMENT (FAX NO. 24643965/24699216/24623220)

**TO: CONTROL ROOM, NDM, MINISTRY OF HOME AFFAIRS (FAX.NO. 23093750)
CONTROL ROOM NDMA (FAX.NO. 26701729)
CABINET SECRETARIAT (FAX.NO.23012284, 23018638)
PS TO HON'BLE MINISTER FOR S & T AND EARTH SCIENCES (FAX NO.23316745)
SECRETARY, MOES (FAX NO. 24629777)
H.Q. (INTEGRATED DEFENCE STAFF AND CDS) (FAX NO. 23005137/23005147)
DIRECTOR GENERAL, DOORDARSHAN (23385843)
DIRECTOR GENERAL, AIR (23421105, 23421219)
PIB MOES (FAX NO. 23389042)
UNI (FAX NO. 23355841)
D.G. NATIONAL DISASTER RESPONSE FORCE (NDRF) (FAX NO. 26105912, 2436 3260)
DIRECTOR, PUNCTUALITY, INDIAN RAILWAYS (FAX NO. 23388503)
CHIEF SECRETARY, GUJARAT (FAX NO. 079-23250305)
CHIEF SECRETARY, DAMAN & DIU (FAX NO. 0260-2230775)
CHIEF SECRETARY, DADRA & NAGAR HAVELI (FAX NO. 0260-2645466)
CHIEF SECRETARY, GOA (FAX NO. 0832-2415201)
CHIEF SECRETARY, MAHARASHTRA (FAX NO. 022- 22028594)
CHIEF SECRETARY, KARNATAKA (FAX NO. 080-22258913)
CHIEF SECRETARY, KERALA (FAX NO. 0471-2327176)
ADMINISTRATOR, LAKSHADWEEP ISLANDS (FAX NO. 0413-262184)
CHIEF SECRETARY, ANDHRA PRADESH (FAX NO. 0863-2441029, 08645-246600)
CHIEF SECRETARY, TAMIL NADU (FAX NO 044-25672304)
CHIEF SECRETARY, PUDUCHERRY (FAX NO 0413-2334145)
CHIEF SECRETARY, GOVT. OF GUJARAT (FAX NO. 079-23250305)
ADMINISTRATOR, ANDAMAN & NICOBAR ISLANDS (FAX NO. 03192- 232656)**

**Sub: (A) Deep Depression over Eastcentral Arabian Sea
(B) Low pressure area over Southeast Bay of Bengal & adjoining areas of East Equatorial Indian Ocean**

(A) Deep Depression over Eastcentral Arabian Sea

Deep Depression over Eastcentral Arabian Sea moved west-northwestwards with a speed of 11 kmph during past 06 hours and lay centered at 1130 hrs IST of today, the 15th December 2022 over the same region near latitude 13.9^oN and longitude 67.5^oE about 650 km west-northwest of Aminidivi (Lakshadweep), about 700 km west-southwest of Panjim (Goa) and 1480 km east-southeast of Salalah (Oman).

It is very likely to move nearly westwards over central Arabian Sea away from Indian coast, maintain intensity of deep depression till early hours of tomorrow, the 16th December and weaken gradually thereafter.

Forecast Track and Intensity:

Date/Time(IST)	Forecast Lead Period	Position (Lat. °N/ long. °E)	Maximum sustained surface wind speed (kmph)	Category of cyclonic disturbance
15.12.22/1130	00	13.9/67.5	55-65 gusting to 75	Deep Depression
15.12.22/2330	12	14.1/65.9	50-60 gusting to 70	Deep Depression
16.12.22/1130	24	14.2/63.9	45-55 gusting to 65	Depression
16.12.22/2330	36	14.2/62.4	40-50 gusting to 60	Depression
17.12.22/1130	48	13.9/61.0	35-45 gusting to 55	Depression
17.12.22/2330	60	13.3/59.7	25-35 gusting to 45	Well Marked Low

Warnings:

(i) **Heavy Rainfall warning: No warning** as the deep depression is moving away from Indian coast.

(ii) **Wind warning (warning graphics enclosed):**

- **Southeast Arabian Sea: Squally weather with wind speed reaching 45-55 kmph gusting to 65 kmph** till 15th evening and decrease gradually thereafter.
- **Eastcentral Arabian Sea: Squally weather with wind speed reaching 55-65 kmph gusting to 75 kmph** is prevailing around the system center and is likely to decrease gradually becoming 45-55 kmph gusting to 65 kmph by 16th morning. It will gradually decrease further becoming 35-45 kmph gusting to 55 kmph by 17th morning.
- **Westcentral Arabian Sea: Squally weather with wind speed reaching 35-45 kmph gusting to 55 kmph** is prevailing over Westcentral Arabian Sea. It is likely to become 45-55 kmph gusting to 65 kmph by 15th December evening and continue till 16th December afternoon. It will decrease gradually thereafter becoming 35-45 kmph gusting to 55 kmph by 17th morning.
- **Southwest Arabian Sea: Squally weather with wind speed reaching 35-45 kmph gusting to 55 kmph** is prevailing over the region and is likely to become 45-55 kmph gusting to 65 kmph during 16th morning to 17th December morning. It will gradually decrease thereafter.

(iii) **Sea Condition**

- ❖ **Southeast Arabian Sea: Sea Condition** is likely to be rough to very rough till 16th morning and improve thereafter.
- ❖ **Eastcentral Arabian Sea: Sea Condition** is likely to be rough to very rough till 17th morning and improve thereafter.
- ❖ **Westcentral Arabian Sea: Sea Condition** is likely to be rough becoming rough to very rough from 15th evening to 17th December morning and improve thereafter.
- ❖ **Southwest Arabian Sea: Sea Condition** is likely to be rough from 15th evening becoming rough to very rough during 16th to 17th December morning.

(iv) **Fishermen Warning:**

Fishermen are advised not to venture into

- ❖ **Southeast Arabian Sea** till 16th December morning.
- ❖ **Eastcentral Arabian Sea** till 17th morning.
- ❖ **Westcentral & Southwest Arabian Sea** till 17th December.

(B) Low pressure area over Southeast Bay of Bengal & adjoining East Equatorial Indian Ocean

The **Low Pressure Area** over Southeast Bay of Bengal & adjoining East Equatorial Indian Ocean persists over the same region at 1130 hours IST of today, the 15th December. It is likely to move gradually westwards and become **Well Marked Low Pressure Area** over the same region during next 12 hours. Thereafter, it would continue to move westwards and maintain its intensity over South Bay of Bengal till morning of 17th December 2022.

Warnings:

(i) Heavy Rainfall Warning:

Light to moderate rainfall at many places with heavy rainfall at isolated places is very likely over Andaman & Nicobar Islands on 15th and 16th December, 2022.

(ii) Wind warning:

- ❖ **Squally weather with wind speed reaching 35-45 kmph gusting to 55 kmph** is very likely over south Andaman Sea on 15th December.
- ❖ **Squally wind speed reaching 35-45 kmph gusting to 55 kmph** is likely over Southeast Bay of Bengal till 16th December.
- ❖ **Squally wind speed reaching 35-45 kmph gusting to 55 kmph** is likely to prevail over Southwest Bay of Bengal on 16th and 17th December

(iii) Sea condition: Sea condition is likely to be rough over

- ❖ South Andaman Sea on 15th December.
- ❖ Southeast Bay of Bengal till 16th December.
- ❖ Southwest Bay of Bengal on 16th and 17th December.

(iv) Fishermen Warning (warning graphics enclosed)

Fishermen are advised not to venture into:

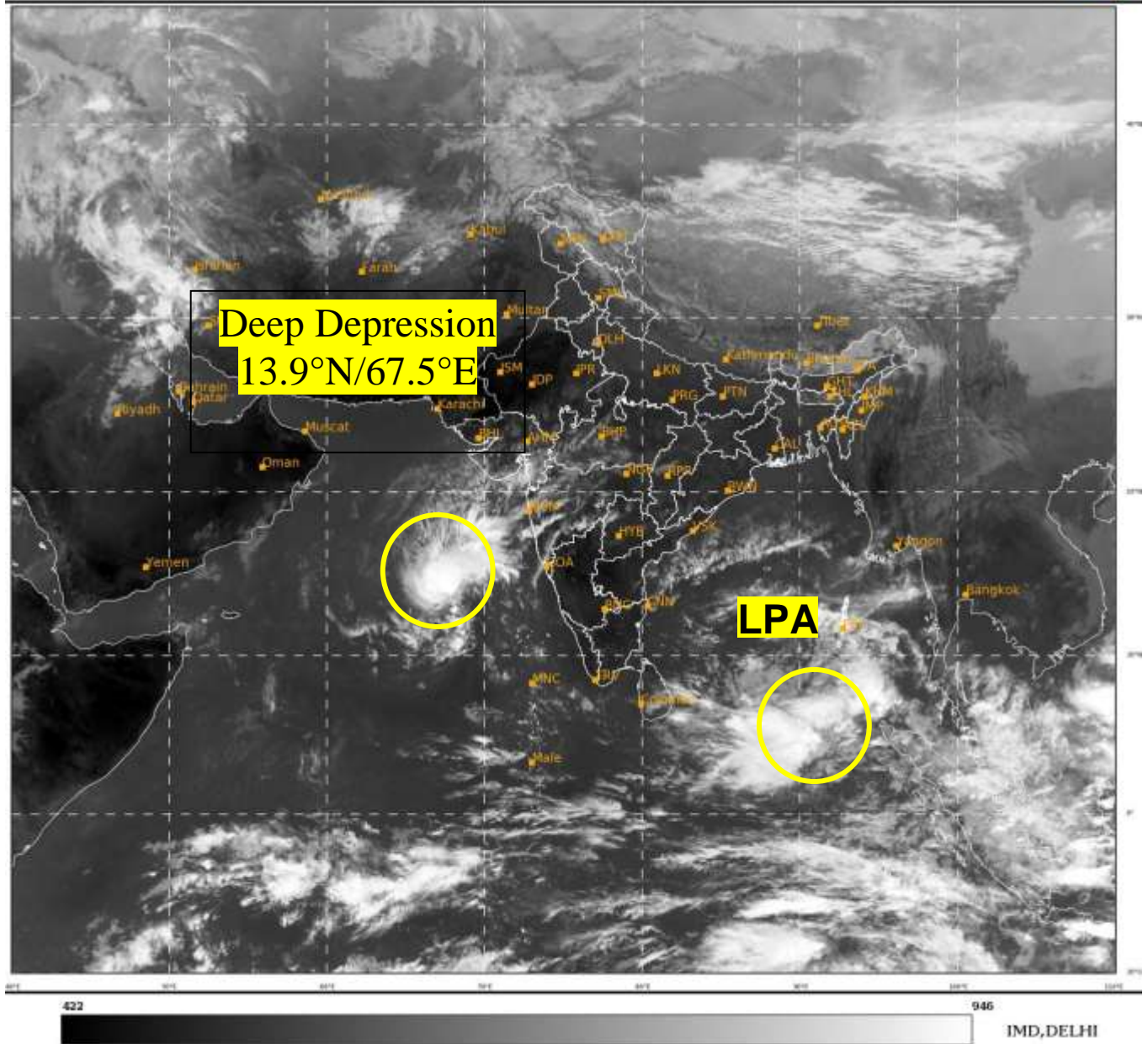
- ❖ South Andaman Sea on 15th December.
- ❖ Southeast Bay of Bengal till 16th December.
- ❖ Southwest Bay of Bengal on 16th and 17th December.

Both the systems are under continuous surveillance and the next message will be issued at 1430 hours IST of today, the 15th December, 2022.

(Ananda Kumar Das)
Scientist E, Cyclone Warning Division, New Delhi

Copy to: ACWC Mumbai/ ACWC Chennai/ /CWC Ahmedabad/ CWC Thiruvananthapuram/MC Goa

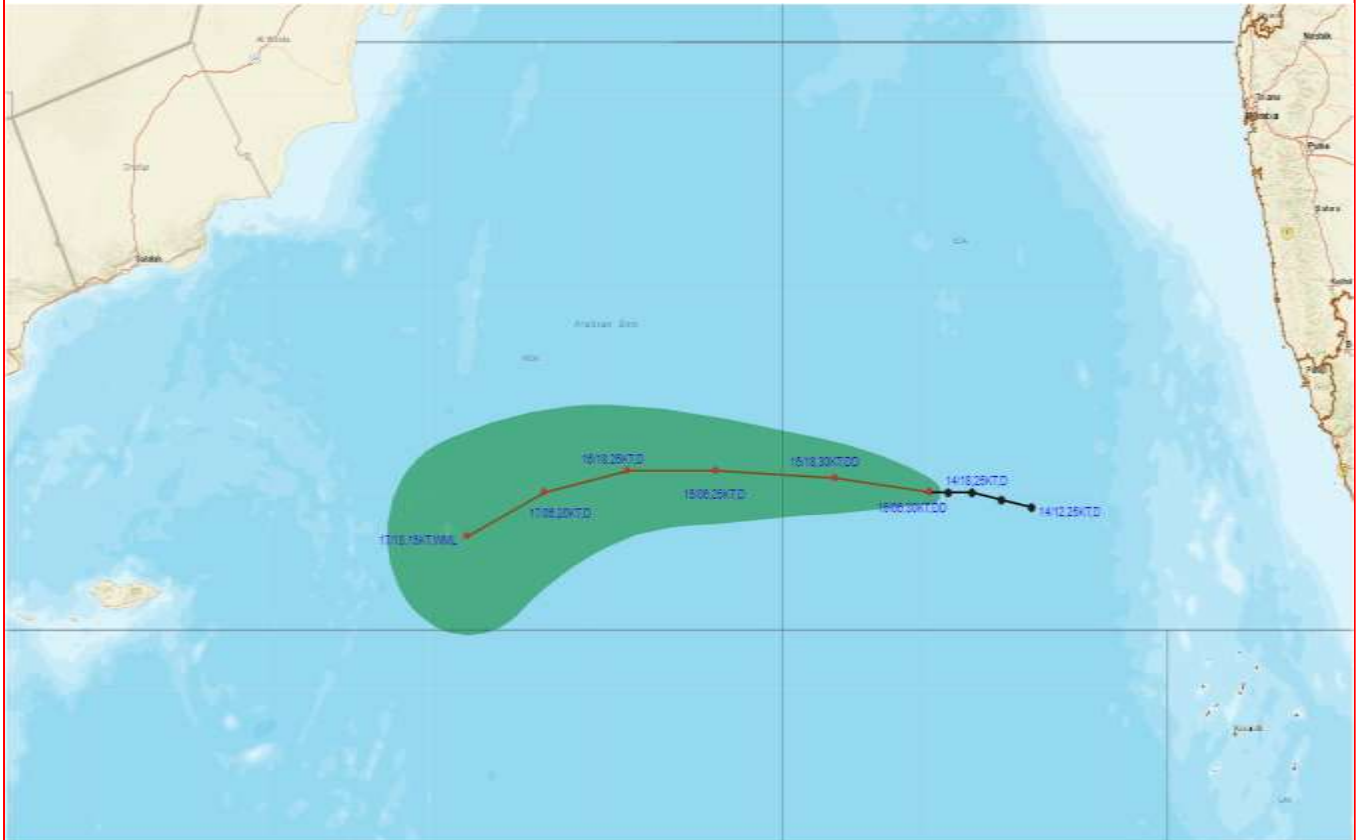
LEGEND: Heavy Rainfall: 64.5 to 115.5mm, **Very Heavy Rainfall:** 115.6 to 204.4mm
Most Places: more than 76% of total stations, **Isolated Places:** Less than 25% of total



LPA – Low Pressure Area



OBSERVED AND FORECAST TRACK OF DEEP DEPRESSION OVER EASTCENTRAL ARABIAN SEA BASED ON 0600 UTC OF 15TH DECEMBER, 2022

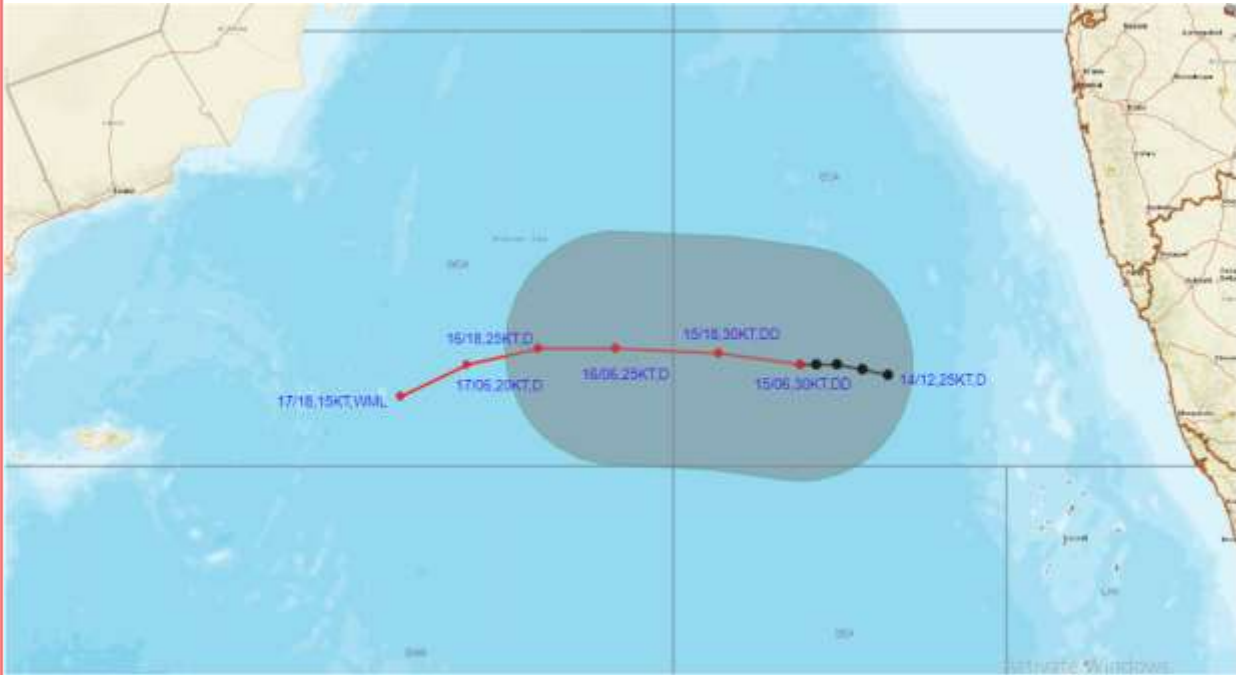


DATE/TIME IN UTC
IST=UTC + 0530
L: LOW PRESSURE AREA
WML: WELL MARKED LOW PRESSURE AREA
D: DEPRESSION (17-27 KT)
DD: DEEP DEPRESSION (28-33 KT)
CS: CYCLONIC STORM (34-47 KT)
SCS: SEVERE CYCLONIC STORM (48-63KT)
VSCS: VERY SEVERE CYCLONIC STORM (64-89 KT)
ESCS: EXTREMELY SEVERE CYCLONIC STORM (90-119 KT)
SuCS: SUPER CYCLONIC STORM (\geq 120 KT)

-  LESS THAN 34 KT
-  34-47 KT
-  \geq 48 KT
-  OBSERVED TRACK
-  FORECAST TRACK
-  CONE OF UNCERTAINTY



OBSERVED AND FORECAST TRACK ALONGWITH QUADRANT WIND DISTRIBUTION OF DEEP DEPRESSION OVER EASTCENTRAL ARABIAN SEA BASED ON 0600 UTC OF 15TH DECEMBER, 2022



DATE/TIME IN UTC

IST=UTC + 0530

L: LOW PRESSURE AREA

WML: WELL MARKED LOW PRESSURE AREA

D: DEPRESSION (17-27 KT)

DD: DEEP DEPRESSION (28-33 KT)

CS: CYCLONIC STORM (34-47 KT)

SCS: SEVERE CYCLONIC STORM (48-63KT)

VSCS: VERY SEVERE CYCLONIC STORM (64-89 KT)

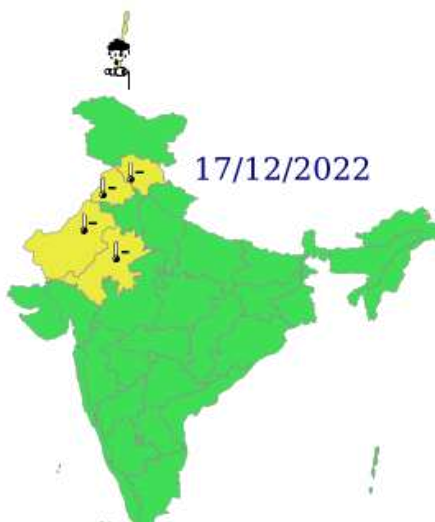
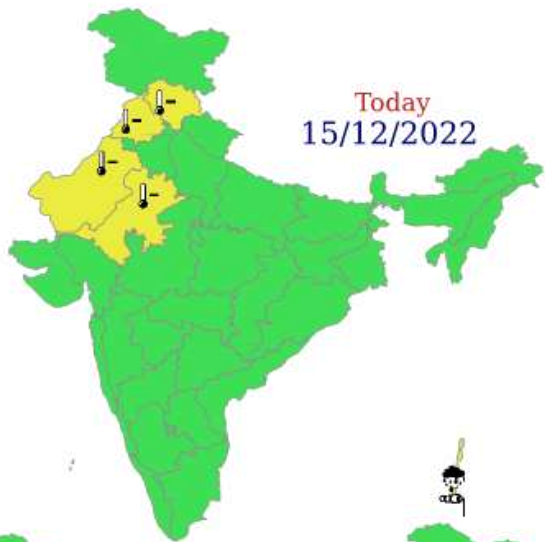
ESCS: EXTREMELY SEVERE CYCLONIC STORM (90-119 KT)

SuCS: SUPER CYCLONIC STORM (≥ 120 KT)

- LESS THAN 34 KT
- 34-47 KT
- ≥ 48 KT
- OBSERVED TRACK
- FORECAST TRACK
- ▲ CONE OF UNCERTAINTY
- AREA OF MAXIMUM SUSTAINED WIND SPEED:
- 28-33 KT (52-61 KMPH)
- 34-49 KT (62-91 KMPH)
- 50-63 KT (92-117 KMPH)
- ≥ 64 KT (≥118 KMPH)

IMPACT OVER THE SEA

MSW (knot/kmph)	Impact	Action
28-33 (52-61)	Very rough seas	Total suspension of fishing operations
34-49 (62-91)	High to very high seas	Total suspension of fishing operations
50-63 (92-117)	Very high seas	Total suspension of fishing operations
≥ 64 (≥118)	Phenomenal	Total suspension of fishing operations



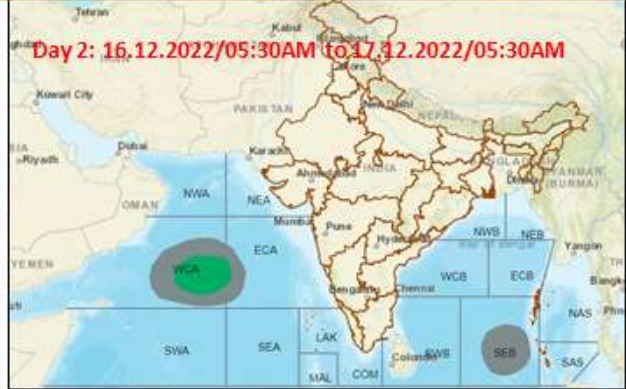
- | | | | |
|--|--|--|--|
|  Heavy Rain |  Heavy Snow |  Thunderstorm |  Dust Storm |
|  Strong Winds |  Visibility |  Cyclone |  Squall/ Hail |
|  Frost |  Cold Wave |  Heat Wave |  Sea State |

Fishermen warning graphics

Day 1: 15.12.2022/11:30AM to 16.12.2022/05:30AM



Day 2: 16.12.2022/05:30AM to 17.12.2022/05:30AM



Day 3: 17.12.2022/05:30AM to 18.12.2022/05:30AM



Day 4: 18.12.2022/05:30AM to 19.12.2022/05:30AM



Day 5: 19.12.2022/05:30AM to 20.12.2022/05:30AM



Squally WX with wind speed 40-45 kmph gusting to 55 kmph

Squally wind speed 45-55 kmph gusting to 65 kmph

Squally wind speed 55-65 kmph gusting to 75 kmph

Fishermen are advised not to venture into the marked areas.